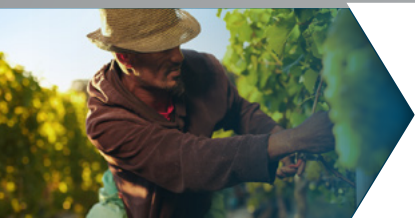


In Demand Entry-Level Occupations

Santa Maria – Santa Barbara Metropolitan Statistical Area
Santa Barbara County

An entry-level occupation requires a high school diploma or equivalent or less.



Farmworkers and Laborers, Crop, Nursery, and Greenhouse

24,720 TOTAL PROJECTED JOB OPENINGS **\$15.28** MEDIAN HOURLY WAGE



Combined Food Preparation and Serving Workers, Including Fast Food

10,100 TOTAL PROJECTED JOB OPENINGS **\$15.60** MEDIAN HOURLY WAGE



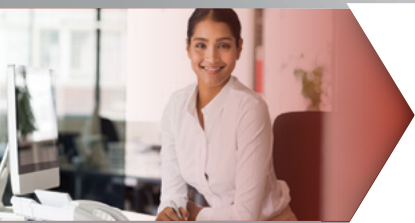
Waiters and Waitresses

9,870 TOTAL PROJECTED JOB OPENINGS **\$15.36** MEDIAN HOURLY WAGE



Cashiers

9,610 TOTAL PROJECTED JOB OPENINGS **\$15.12** MEDIAN HOURLY WAGE



Office Clerks, General

8,380 TOTAL PROJECTED JOB OPENINGS **\$19.87** MEDIAN HOURLY WAGE

Source: California Employment Development Department, Projections of Employment 2018-2028. Total projected job openings are the sum of numeric change, exits, and transfers. Occupational Employment Statistics Wage Survey, updated to first quarter of 2022.

Data Note: Per the Bureau of Labor Statistics, some occupations are no longer being published separately and instead were published as aggregations. The median hourly wage for Personal Care Aides was aggregated into Home Health and Personal Care Aides. The median hourly wage for Combined Food Preparation and Serving Workers, Including Fast Food was aggregated into Fast Food and Counter Workers.