

Economic Update LMID Advisory Group Meeting August 3, 2017

Brandon T. Hooker

Employment Development Department

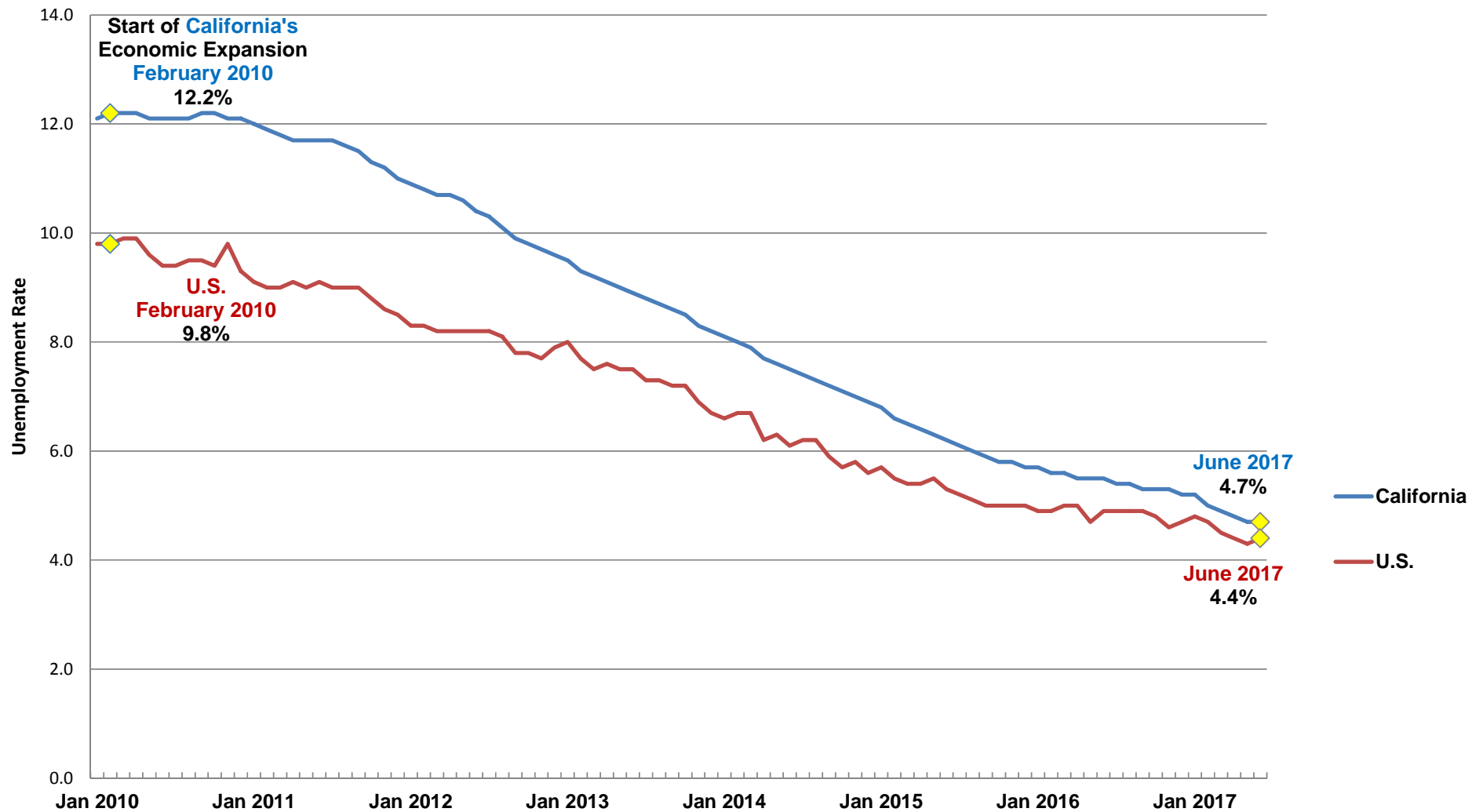
Labor Market Information Division



Unemployment Rates: U.S. and California

U.S. and California Unemployment Rates

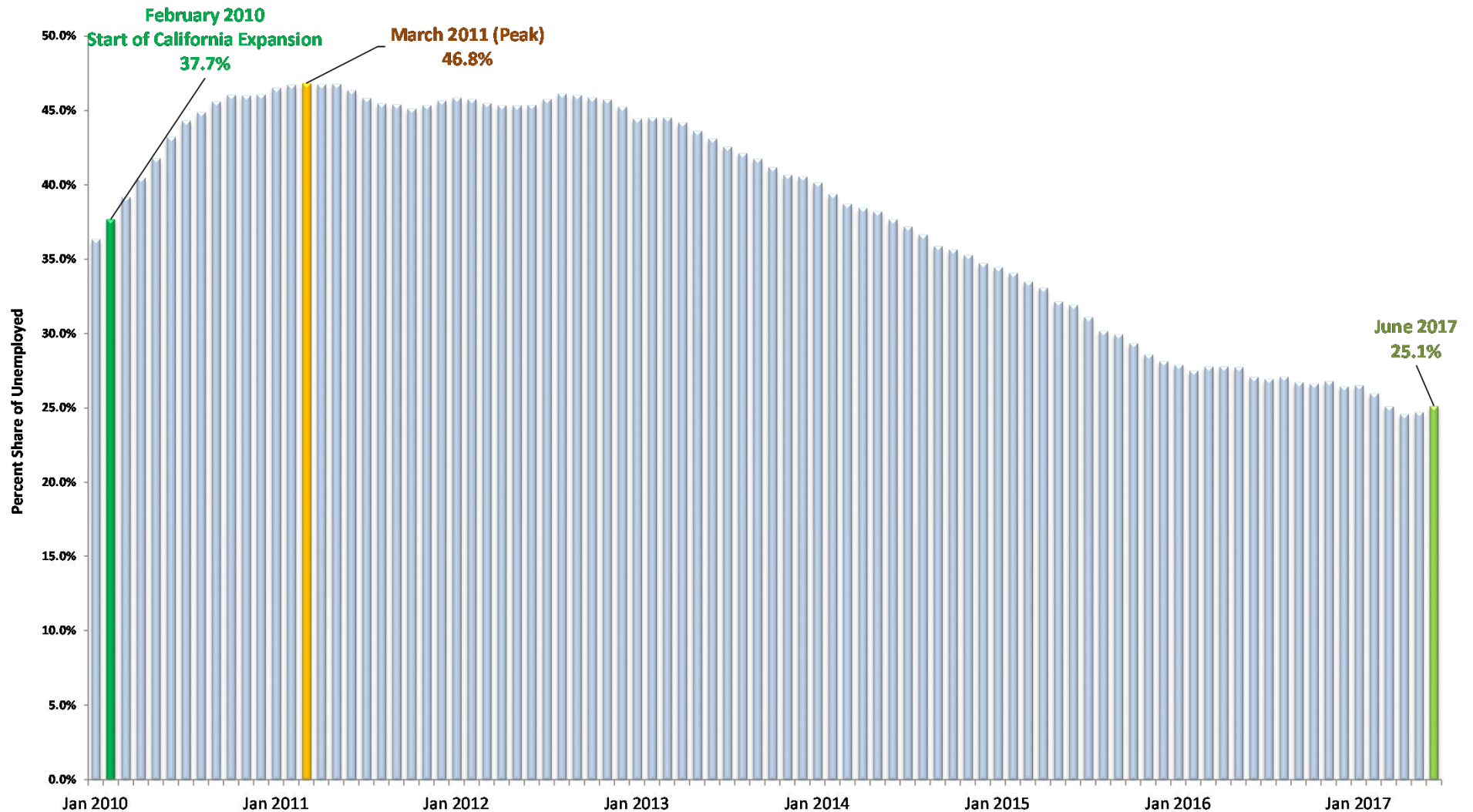
Source: EDD



California: Long-Term Unemployed

California's Long Term Unemployed: Percent Share of Unemployed

Source: Current Population Survey of Households, 12-month moving average

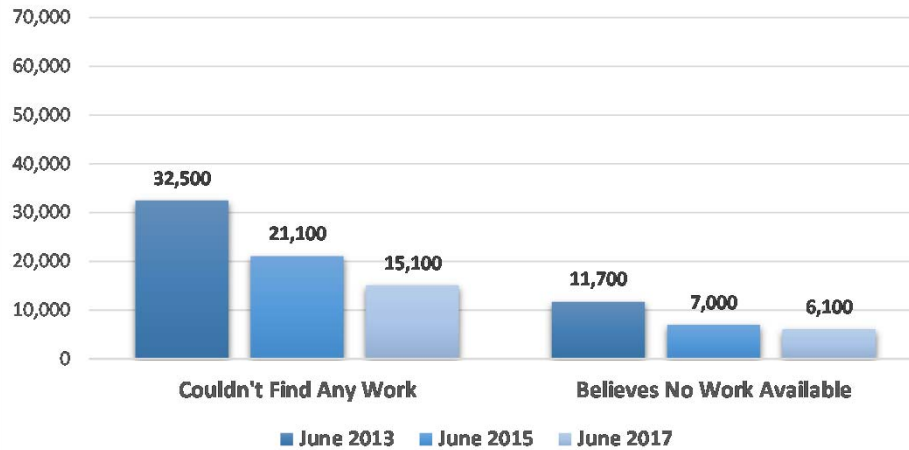


Long-Term Unemployed: refers to individuals who have been looking for work for 27 weeks or more.
(Bureau of Labor Statistics)

California: Discouraged Worker Trends

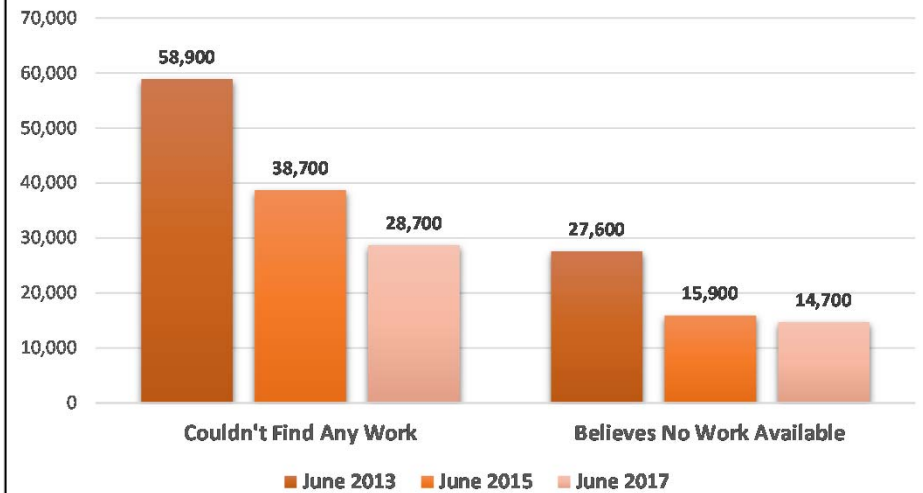
California Discouraged Workers: Not in the Labor Force
16-24 Years Olds

Source: Current Population Survey of Households, 12-month moving average



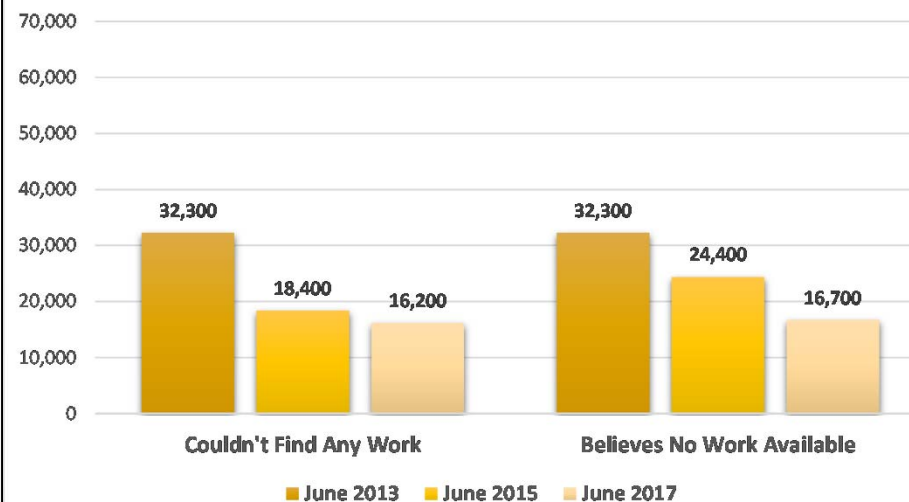
California Discouraged Workers: Not in the Labor Force
25-54 Years Olds

Source: Current Population Survey of Households, 12-month moving average



California Discouraged Workers: Not in the Labor Force
55 Years and Older

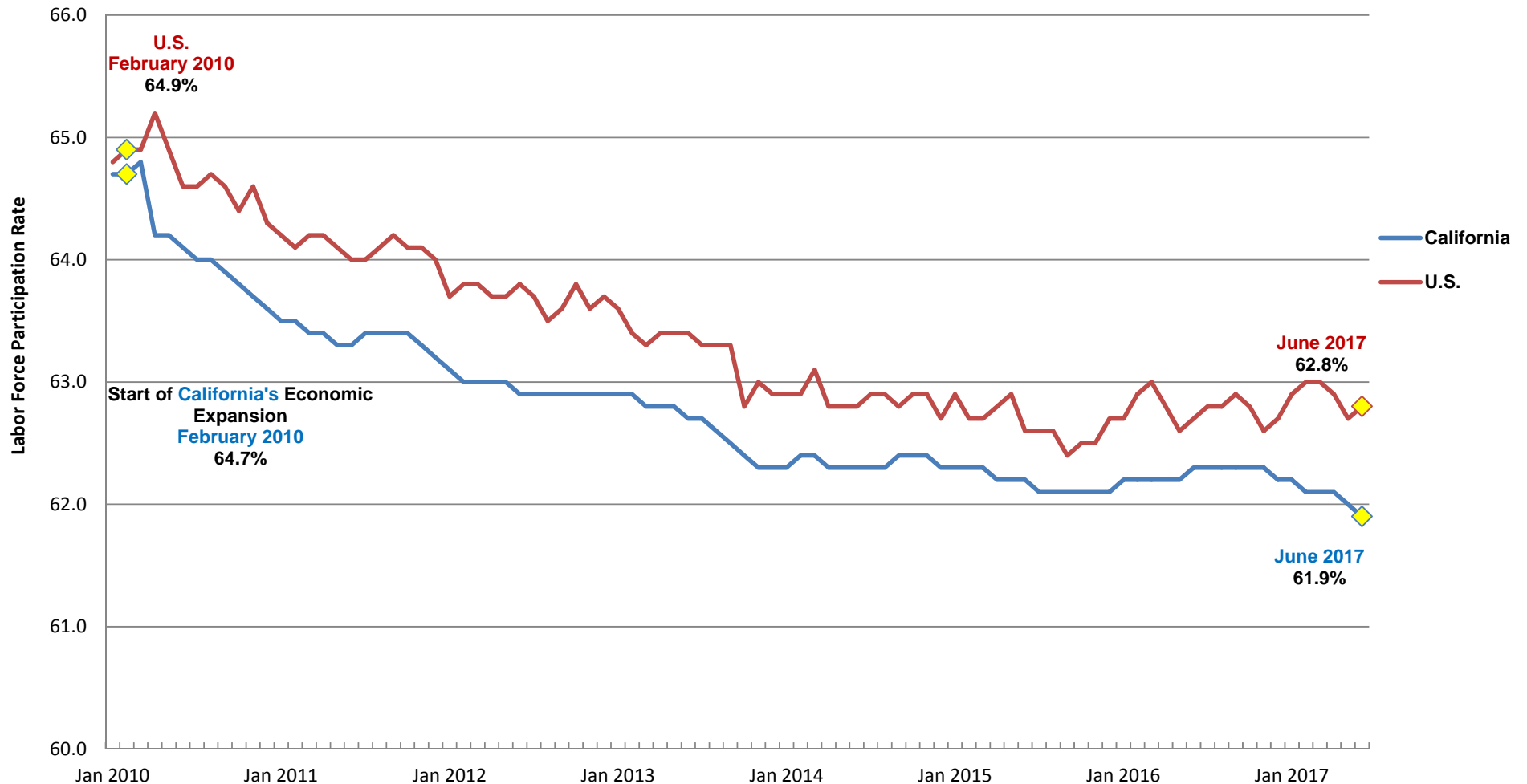
Source: Current Population Survey of Households, 12-month moving average



Labor Force Participation Rates: U.S. and California

U.S. and California Labor Force Participation Rates

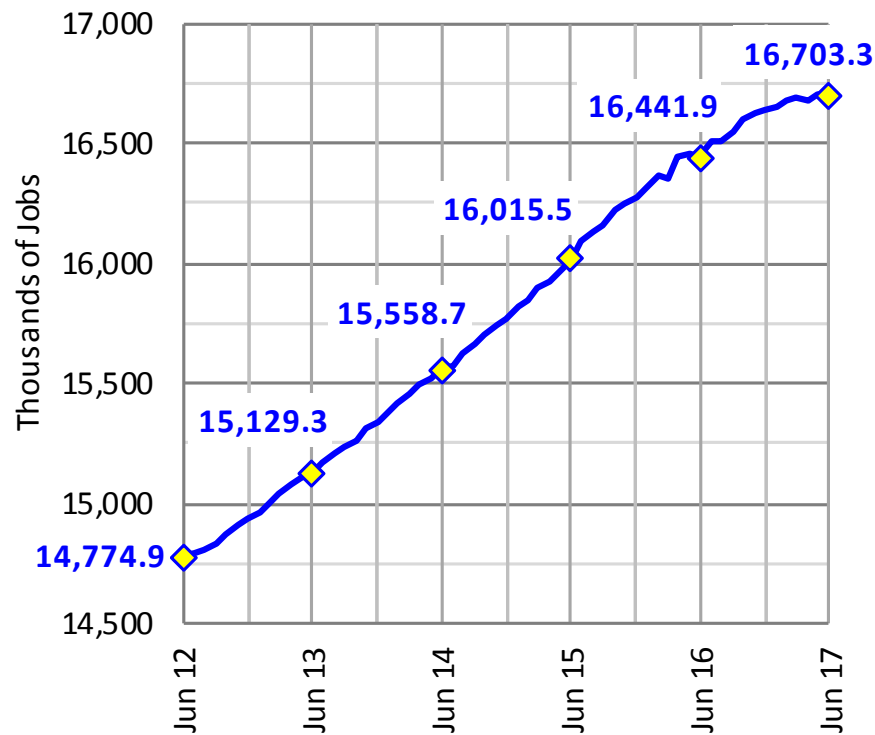
Source: EDD



California: Nonfarm Employment Trends

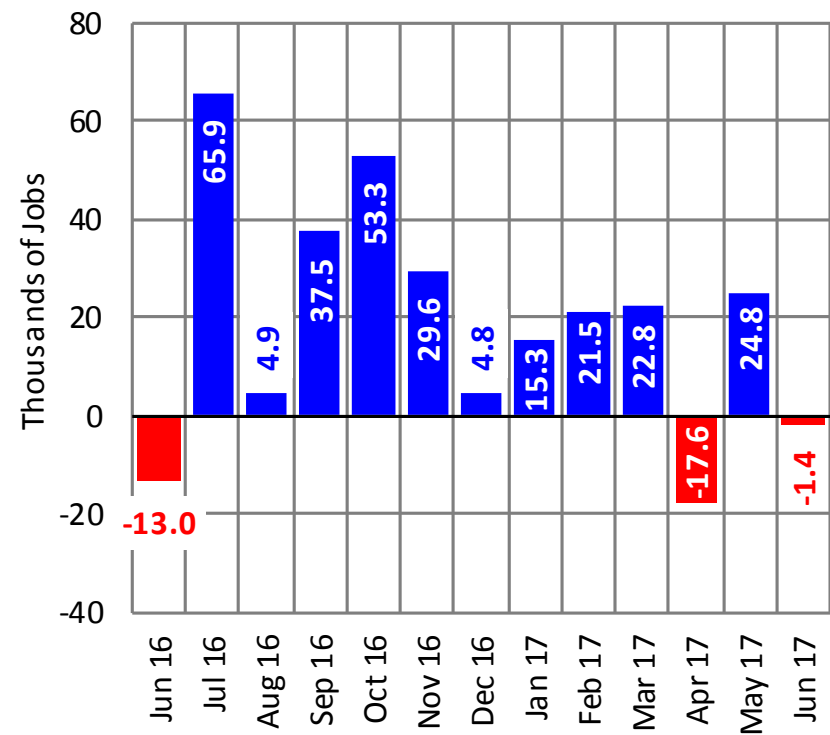
**California Total Nonfarm Jobs
Five-Year Trend**

June 2017; Seasonally Adjusted Data



**Month-Over Changes in California
Total Nonfarm Jobs**

June 2017; Seasonally Adjusted Data



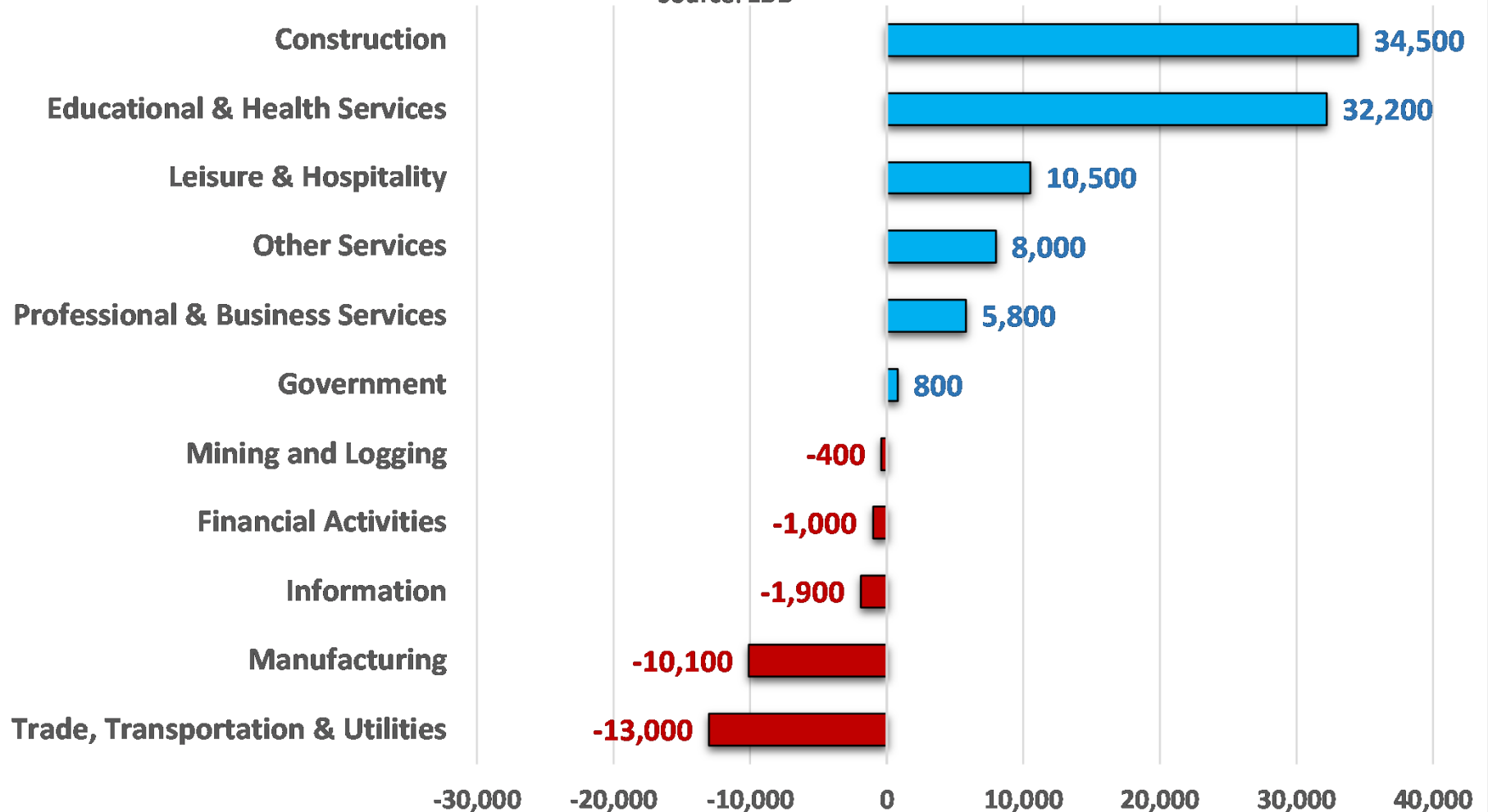
California: Industry Sector Trends

California: Collective Nonfarm Payroll Job Changes

January - June 2017

Seasonally Adjusted

Source: EDD



E-Commerce Trends



- In the U.S., E-commerce based retail sales totaled 5 billion dollars in the month of May 1997 and by May 2007 this sales figure increased to 18 billion and by May 2017, it stood at 44 billion dollars.
- In 2016, California had 3,000+ establishments classified as electronic shopping, electronic auction, or mail-order houses.
- County locations: Los Angeles (1,000+ establishments), Orange County (300+), San Diego (250+), and San Francisco (100+).

California: Retail Trade Subsector Trends

California: Trends in Retail Trade Subsector
Source: CA EDD

